

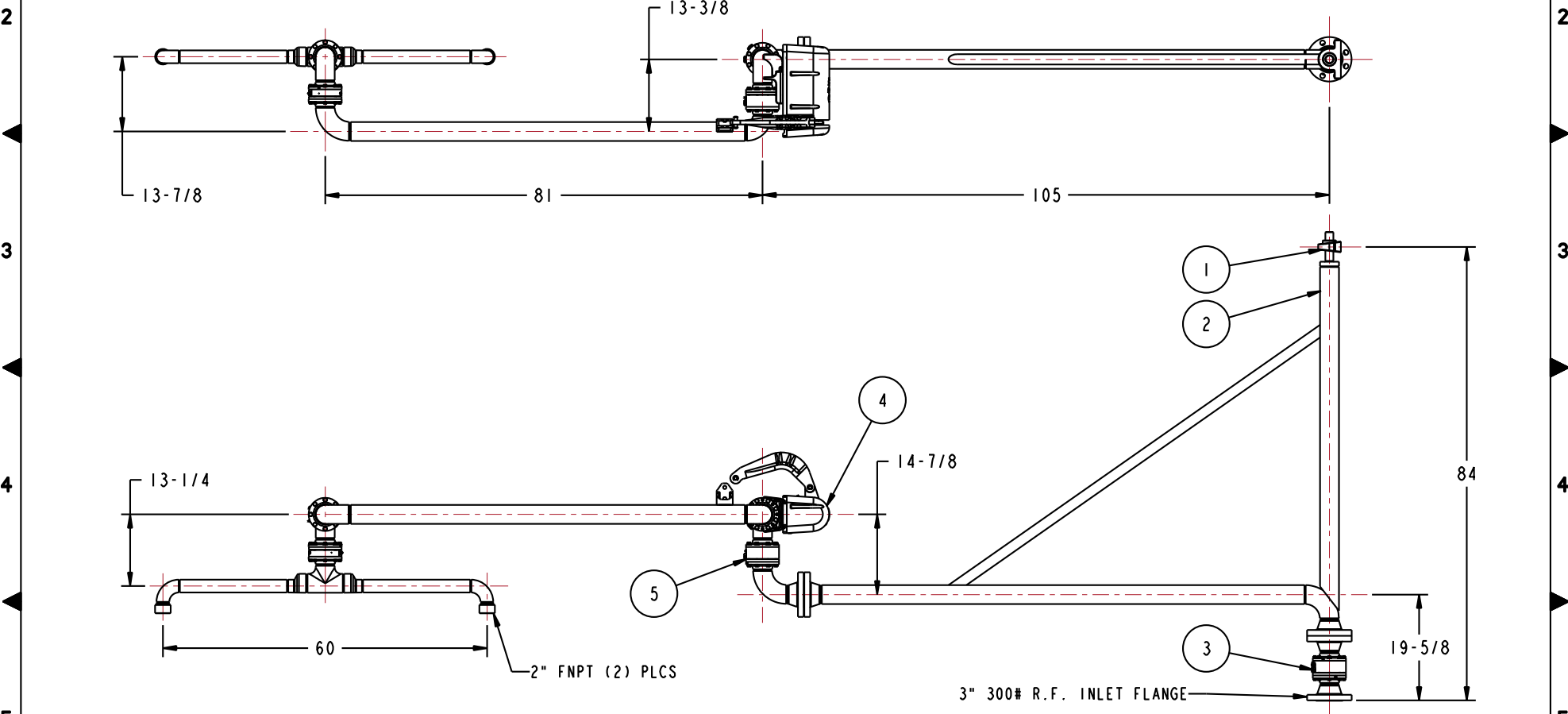
A B C D E

MATERIALS OF CONSTRUCTION	LOW-TEMP CARBON STEEL
SWIVEL JOINT SEALS	LOW-TEMP BUNA
PRODUCT	LPG PRODUCT
CRN	OH01043.2
ESTIMATED WEIGHT	625 LBS
MOMENT LOAD AT SPRING	12,025 IN-LBS
MOMENT LOAD AT INLET	52,850 IN-LBS
FLANGE GASKETS	KLINGER SIL C5400
FLANGED CONNECTIONS	300# RAISED FACE WELDNECK
TEST PRESSURE	450 PSI
PRODUCT RETENTION	NO
WEIGHT BY OTHERS	DROP HOSES & LPG FITTINGS NOT TO EXCEED 50 LBS TOTAL

THIS DRAWING IS NOT TO BE SCALED. FOR ADDITIONAL INFORMATION, PLEASE CONTACT OUR ENGINEERING DEPT.

REVISIONS				DRAWN	APPROVED	DATE
LT#	ECN #	DESCRIPTION				

9	1	EA	H31795PA	RADIOGRAPHIC INSPECTION REQUIRED, 10%
8	1	EA	H31788PA	MATERIAL CERTS REQUIRED
7	1	EA	LADOC-STD	LOADING ARM, NAME TAG AND HARDWARE
6	2	EA	FHK-300-03-CS	FLANGE HARDWARE KIT, 300LB, CS, 3"
5	1	EA	8476FW	3" X 2" SWIVEL ASSY, ENDURA DSF, CST
4	1	EA	790CLH-0045	LEFT HAND EZ ADJUST 'C' SPRING BALANCE
3	1	EA	8420F	3" SWIVEL, ENDURA DSF, CST
2	1	EA	N/A	3" BOOM ASSEMBLY
1	1	EA	H-01180-M	PILLOW BLOCK BEARING
ITEM	QTY	UM	PART NUMBER	DESCRIPTION



CONFIDENTIAL THIS DOCUMENT CONTAINS INFORMATION WHICH IS PROPRIETARY TO OPW, AND SHOULD BE PROTECTED ACCORDINGLY.

DESCRIPTION: 3" X 2" LOADING ARM, UFLH

SIGNATURES	MO-DA-YR
DRAWN: BJB	6/21/10
CHECKED:	
MATERIAL:	WEIGHT:

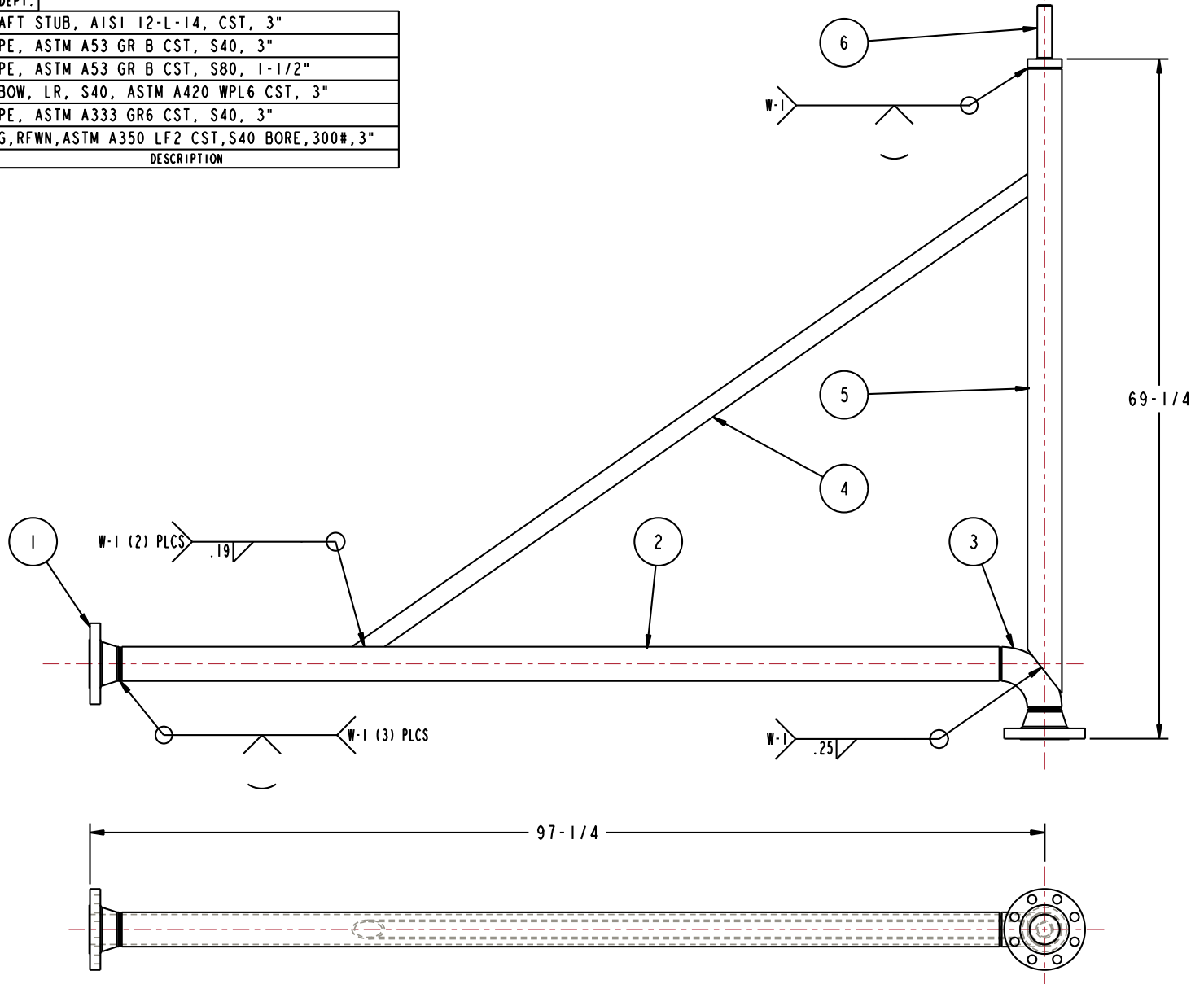
REV: -	PART NUMBER:
SIZE: D	EB32F-J059
	SCALE: 0.075 SHEET 1 OF 6

OPW **Engineered Systems**
 A **ROBERT** Resources Company
 Lebanon, Ohio 45036 USA
 3D GENERATED DRAWING

A B C D E

THIS DRAWING IS NOT TO BE SCALED. FOR ADDITIONAL INFORMATION, PLEASE CONTACT OUR ENGINEERING DEPT.

ITEM	QTY	UM	PART NUMBER	DESCRIPTION
6	1	EA	H-10231-RS	SHAFT STUB, AISI 12-L-14, CST, 3"
5	1	EA	HX98665	63.630 PIPE, ASTM A53 GR B CST, S40, 3"
4	1	EA	HX98665	84.000 PIPE, ASTM A53 GR B CST, S80, 1-1/2"
3	1	EA	HX85018ND	ELBOW, LR, S40, ASTM A420 WPL6 CST, 3"
2	1	EA	HX98665	89.630 PIPE, ASTM A333 GR6 CST, S40, 3"
1	2	EA	HX85019ND	FLG, RFWN, ASTM A350 LF2 CST, S40 BORE, 300#, 3"



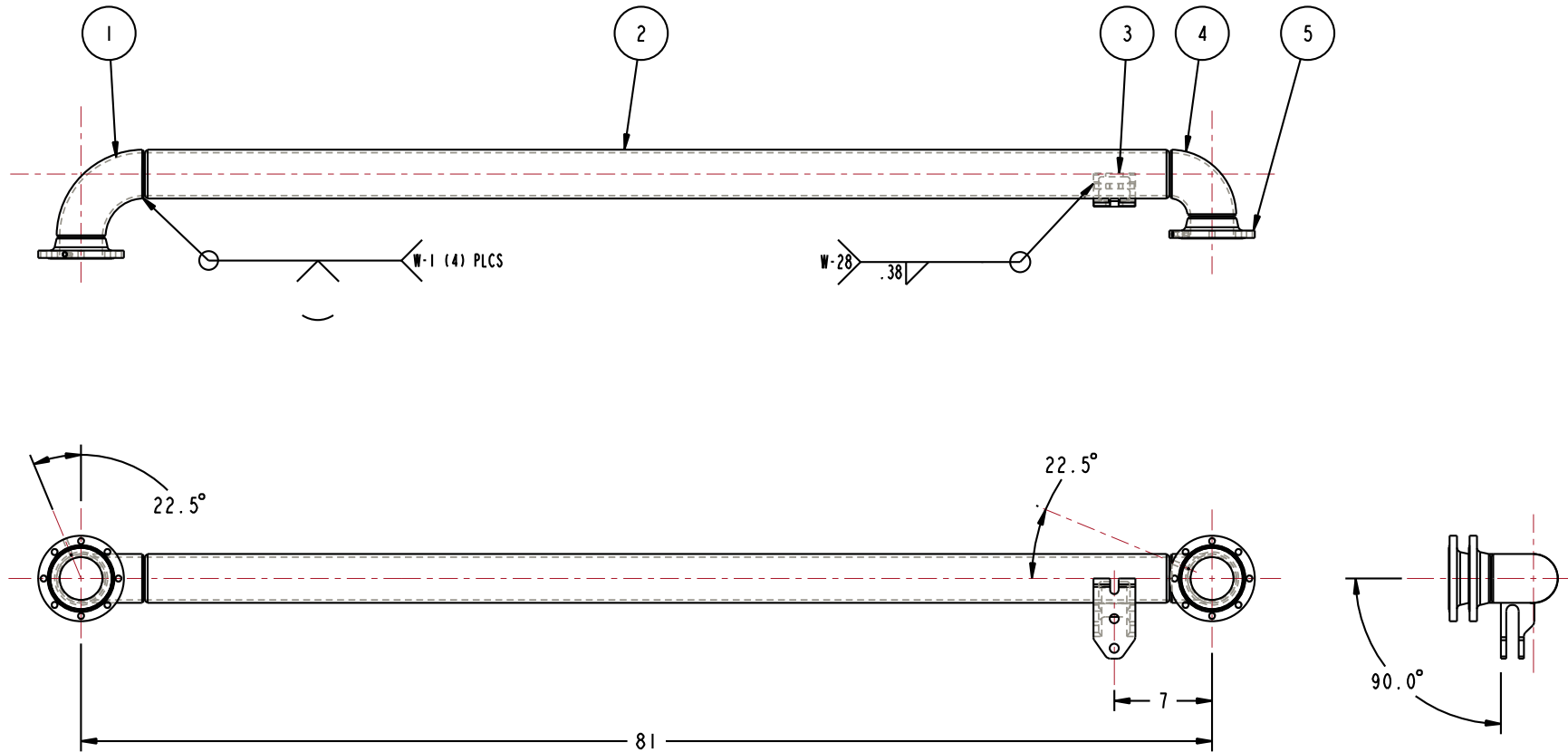
NOTES:

1. WELDING PER OPW WELD SPECIFICATIONS. REFERENCE APPLICABLE WELD SPECIFICATIONS PER COMPONENT.
2. COMPONENT FACE(S) PERPENDICULAR TO CENTER LINE(S) $\pm 5^\circ$
3. ALL FLANGE BOLT HOLES TO STRADDLE CENTER LINE(S)
4. PROTECT FLANGE FACE(S) AND MACHINED SURFACES WHEN WELDING
5. ALIGN COMPONENTS AS SHOWN $\pm 2^\circ$

CONFIDENTIAL THIS DOCUMENT CONTAINS INFORMATION WHICH IS PROPRIETARY TO OPW, AND SHOULD BE PROTECTED ACCORDINGLY.			DESCRIPTION: 3" X 2" LOADING ARM, UFLH	
SIGNATURES		MO-DA-YR	REV:	PART NUMBER:
DRAWN: BJB		6/21/10	-	EB32F-J059
CHECKED:		-	SIZE:	D
MATERIAL:		WEIGHT:	SCALE: 0.075 SHEET 2 OF 6	
			Engineered Systems <small>A BOSTED Resources Company</small> Lebanon, Ohio 45036 USA 3D GENERATED DRAWING	

THIS DRAWING IS NOT TO BE SCALED. FOR ADDITIONAL INFORMATION, PLEASE CONTACT OUR ENGINEERING DEPT.

ITEM	QTY	UM	PART NUMBER	DESCRIPTION
5	2	EA	C20534RS	FLANGE, DSF, ASTM A350 LF2, CST, 3"
4	1	EA	HX85020ND	ELBOW, SR, S40, ASTM A420 WPL6 CST, 3"
3	1	EA	C20784EW	BRK'T, PIN LUG, DSF, ASTM A995 CD3MN 4A DUPLEX SST, 3"
2	1	EA	HX98665	73.380 PIPE, ASTM A333 GR6 CST, S40, 3"
1	1	EA	HX85018ND	ELBOW, LR, S40, ASTM A420 WPL6 CST, 3"



- NOTES:
1. WELDING PER OPW WELD SPECIFICATIONS. REFERENCE APPLICABLE WELD SPECIFICATIONS PER COMPONENT.
 2. COMPONENT FACE(S) PERPENDICULAR TO CENTER LINE(S) $\pm 5^\circ$
 3. ALL FLANGE BOLT HOLES TO STRADDLE CENTER LINE(S)
 4. PROTECT FLANGE FACE(S) AND MACHINED SURFACES WHEN WELDING
 5. ALIGN COMPONENTS AS SHOWN $\pm 2^\circ$

CONFIDENTIAL THIS DOCUMENT CONTAINS INFORMATION WHICH IS PROPRIETARY TO OPW, AND SHOULD BE PROTECTED ACCORDINGLY.				DESCRIPTION: 3" X 2" LOADING ARM, UFLH	
SIGNATURES		MO-DA-YR	REV:	PART NUMBER:	
DRAWN: BJB		6/21/10	-	EB32F-J059	
CHECKED:		-	SIZE:	SCALE: 0.075 SHEET 3 OF 6	
MATERIAL:		WEIGHT:	D	3D GENERATED DRAWING	

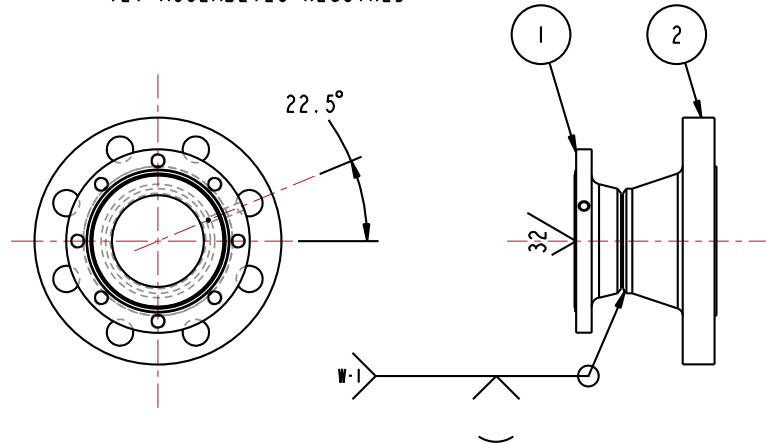
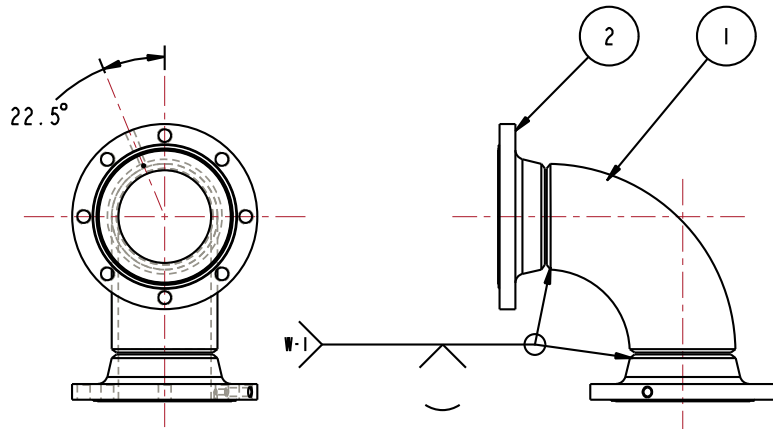
OPW Engineered Systems
 A **ROBERT** Resources Company
 Lebanon, Ohio 45036 USA

THIS DRAWING IS NOT TO BE SCALED. FOR ADDITIONAL INFORMATION, PLEASE CONTACT OUR ENGINEERING DEPT.

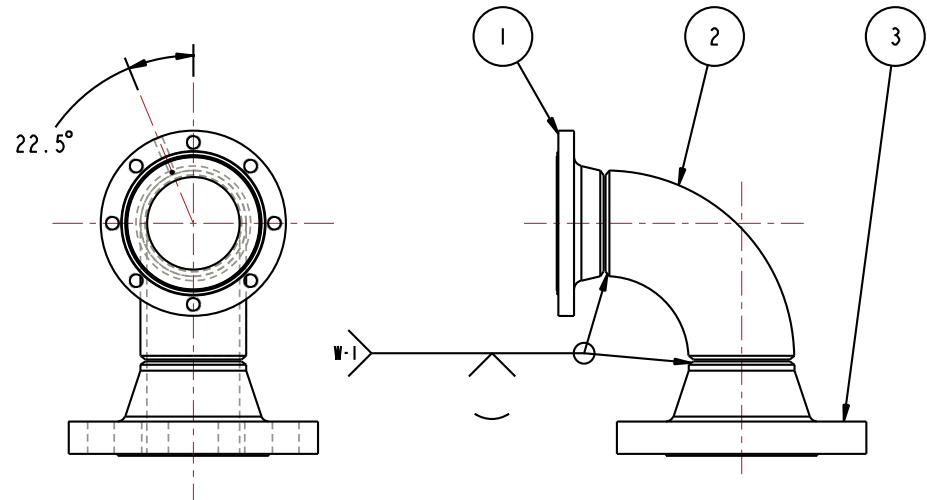
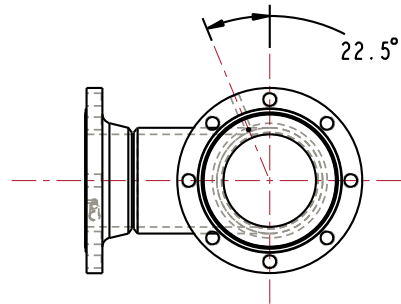
ITEM	QTY	UM	PART NUMBER	DESCRIPTION
2	2	EA	C20534RS	FLANGE, DSF, ASTM A350 LF2, CST, 3"
1	1	EA	HX85018ND	ELBOW, LR, S40, ASTM A420 WPL6 CST, 3"

ITEM	QTY	UM	PART NUMBER	DESCRIPTION
2	1	EA	HX85019ND	FLG, RFWN, ASTM A350 LF2 CST, S40 BORE, 300#, 3"
1	1	EA	C20534RS	FLANGE, DSF, ASTM A350 LF2, CST, 3"

(2) ASSEMBLIES REQUIRED



ITEM	QTY	UM	PART NUMBER	DESCRIPTION
3	1	EA	HX85019ND	FLG, RFWN, ASTM A350 LF2 CST, S40 BORE, 300#, 3"
2	1	EA	HX85018ND	ELBOW, LR, S40, ASTM A420 WPL6 CST, 3"
1	1	EA	C20534RS	FLANGE, DSF, ASTM A350 LF2, CST, 3"



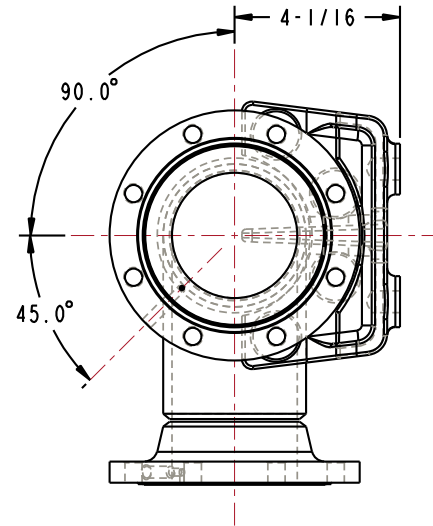
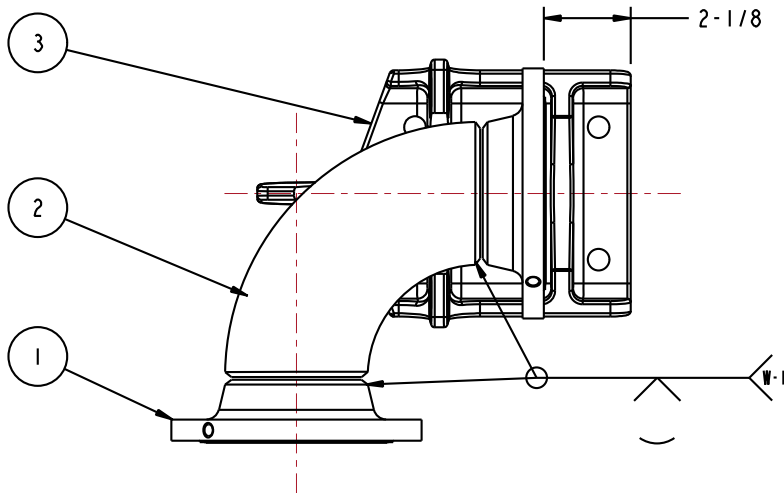
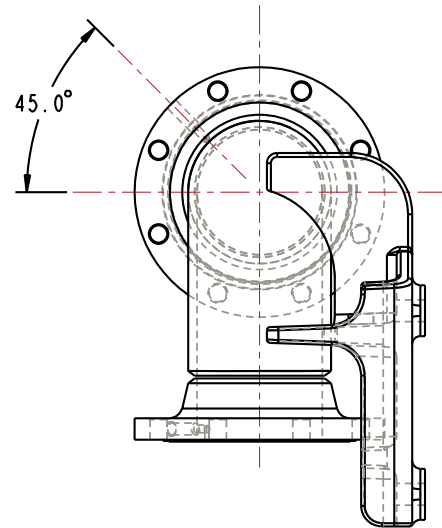
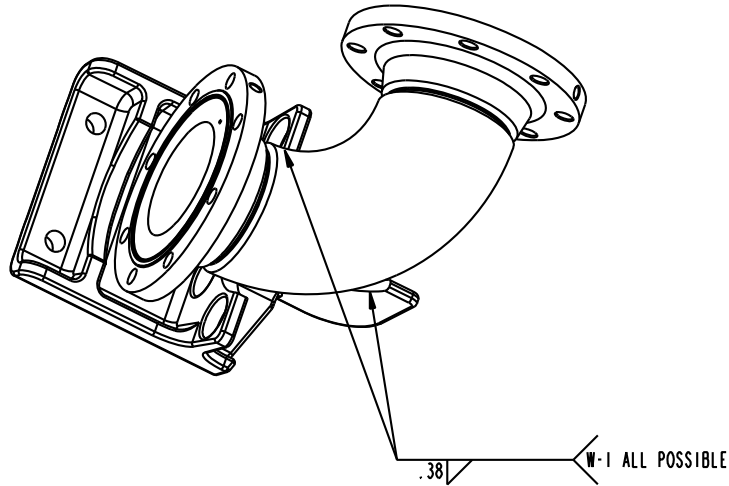
NOTES:

1. WELDING PER OPW WELD SPECIFICATIONS. REFERENCE APPLICABLE WELD SPECIFICATIONS PER COMPONENT.
2. COMPONENT FACE(S) PERPENDICULAR TO CENTER LINE(S) $\pm 0.5^\circ$
3. ALL FLANGE BOLT HOLES TO STRADDLE CENTER LINE(S)
4. PROTECT FLANGE FACE(S) AND MACHINED SURFACES WHEN WELDING
5. ALIGN COMPONENTS AS SHOWN $\pm 2^\circ$

CONFIDENTIAL THIS DOCUMENT CONTAINS INFORMATION WHICH IS PROPRIETARY TO OPW, AND SHOULD BE PROTECTED ACCORDINGLY.				DESCRIPTION: 3" X 2" LOADING ARM, UFLH	
SIGNATURES		MO-DA-YR	REV:	PART NUMBER:	
DRAWN: BJB		6/21/10	-	EB32F-J059	
CHECKED:		-	SIZE:	D	
MATERIAL:		WEIGHT:	-	SCALE: 0.075 SHEET 4 OF 6	
				Engineered Systems <small>A BOSTED Resources Company</small> Lebanon, Ohio 45036 USA 3D GENERATED DRAWING	

THIS DRAWING IS NOT TO BE SCALED. FOR ADDITIONAL INFORMATION, PLEASE CONTACT OUR ENGINEERING DEPT.

ITEM	QTY	UM	PART NUMBER	DESCRIPTION
3	1	EA	C20783EW	BRACKET, TORSION PLT, 2205 SST, DSF, 3"
2	1	EA	HX85018ND	ELBOW, LR, S40, ASTM A420 WPL6 CST, 3"
1	2	EA	C20534RS	FLANGE, DSF, ASTM A350 LF2, CST, 3"



NOTES:

1. WELDING PER OPW WELD SPECIFICATIONS. REFERENCE APPLICABLE WELD SPECIFICATIONS PER COMPONENT.
2. COMPONENT FACE(S) PERPENDICULAR TO CENTER LINE(S) $\pm 5^\circ$
3. ALL FLANGE BOLT HOLES TO STRADDLE CENTER LINE(S)
4. PROTECT FLANGE FACE(S) AND MACHINED SURFACES WHEN WELDING
5. ALIGN COMPONENTS AS SHOWN $\pm 2^\circ$

CONFIDENTIAL THIS DOCUMENT CONTAINS INFORMATION WHICH IS PROPRIETARY TO OPW, AND SHOULD BE PROTECTED ACCORDINGLY.

DESCRIPTION:

3" X 2" LOADING ARM, UFLH

SIGNATURES		MO-DA-YR
DRAWN:	BJB	6/21/10
CHECKED:		
MATERIAL:		
WEIGHT:		

REV: -
SIZE: D

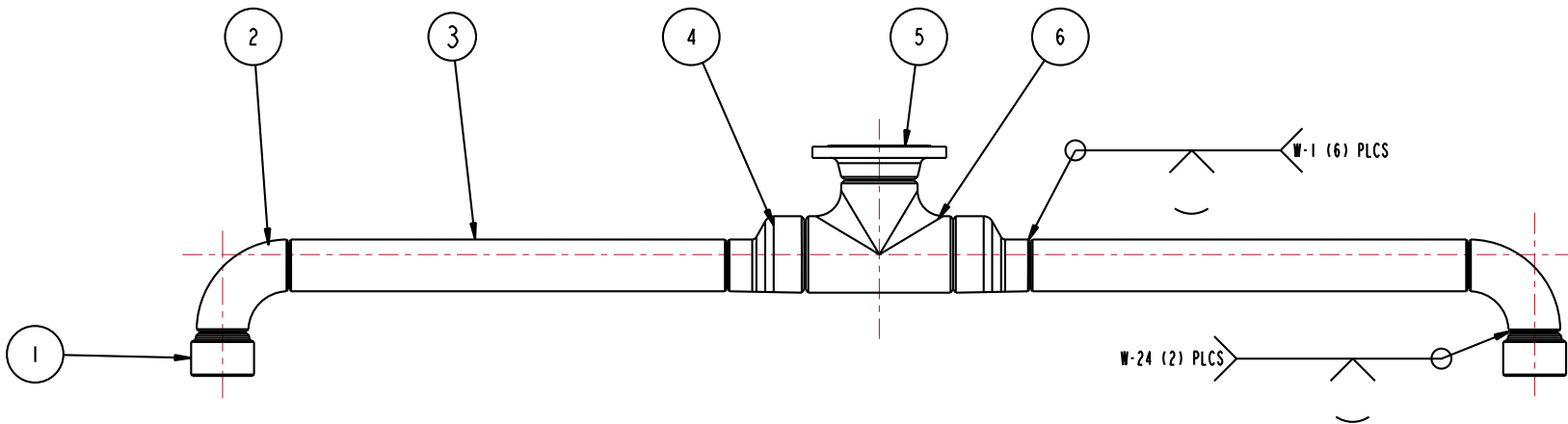
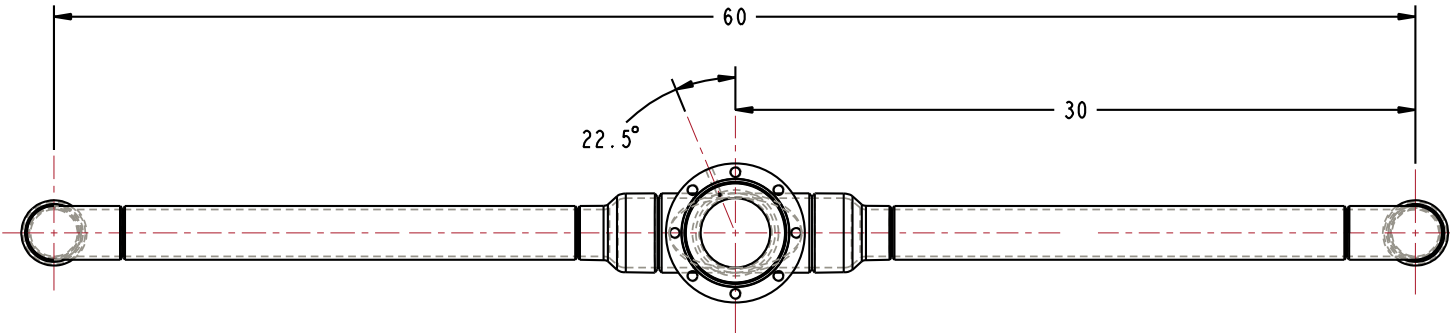
PART NUMBER:
EB32F-J059

OPW **Engineered Systems**
A **ROBERT** Resources Company
Lebanon, Ohio 45036 USA
3D GENERATED DRAWING

SCALE: 0.075 SHEET 5 OF 6

THIS DRAWING IS NOT TO BE SCALED. FOR ADDITIONAL INFORMATION, PLEASE CONTACT OUR ENGINEERING DEPT.

ITEM	QTY	UM	PART NUMBER	DESCRIPTION
6	1	EA	HX97647	WELD TEE, ASTM A240 WPL6 CST, S40, 3"
5	1	EA	C20534RS	FLANGE, DSF, ASTM A350 LF2, CST, 3"
4	2	EA	HX93874ND	REDUCER, ECC, ASTM A420 WPL6 CST, S40, 3 X 2
3	2	EA	HX98665	20.000 PIPE, ASTM A333 GR6 CST, S40, 2"
2	2	EA	HX85030ND	ELBOW, LR, S40, ASTM A420 WPL6 CST, 2"
1	2	EA	H-7746-EW	WELDING COUPLER, ASTM A351CF-3M 316L SST, 2"



NOTES:

1. WELDING PER OPW WELD SPECIFICATIONS. REFERENCE APPLICABLE WELD SPECIFICATIONS PER COMPONENT.
2. COMPONENT FACE(S) PERPENDICULAR TO CENTER LINE(S) $\pm 5^\circ$
3. ALL FLANGE BOLT HOLES TO STRADDLE CENTER LINE(S)
4. PROTECT FLANGE FACE(S) AND MACHINED SURFACES WHEN WELDING
5. ALIGN COMPONENTS AS SHOWN $\pm 2^\circ$

CONFIDENTIAL THIS DOCUMENT CONTAINS INFORMATION WHICH IS PROPRIETARY TO OPW, AND SHOULD BE PROTECTED ACCORDINGLY.				DESCRIPTION: 3" X 2" LOADING ARM, UFLH	
SIGNATURES		MO-DA-YR	REV:	PART NUMBER:	
DRAWN: BJB		6/21/10	-	EB32F-J059	
CHECKED:		-	SIZE: D	SCALE: 0.075 SHEET 6 OF 6	
MATERIAL:		WEIGHT:	-	3D GENERATED DRAWING	

OPW **Engineered Systems**
 A **ROBERTS** Resources Company
 Lebanon, Ohio 45036 USA