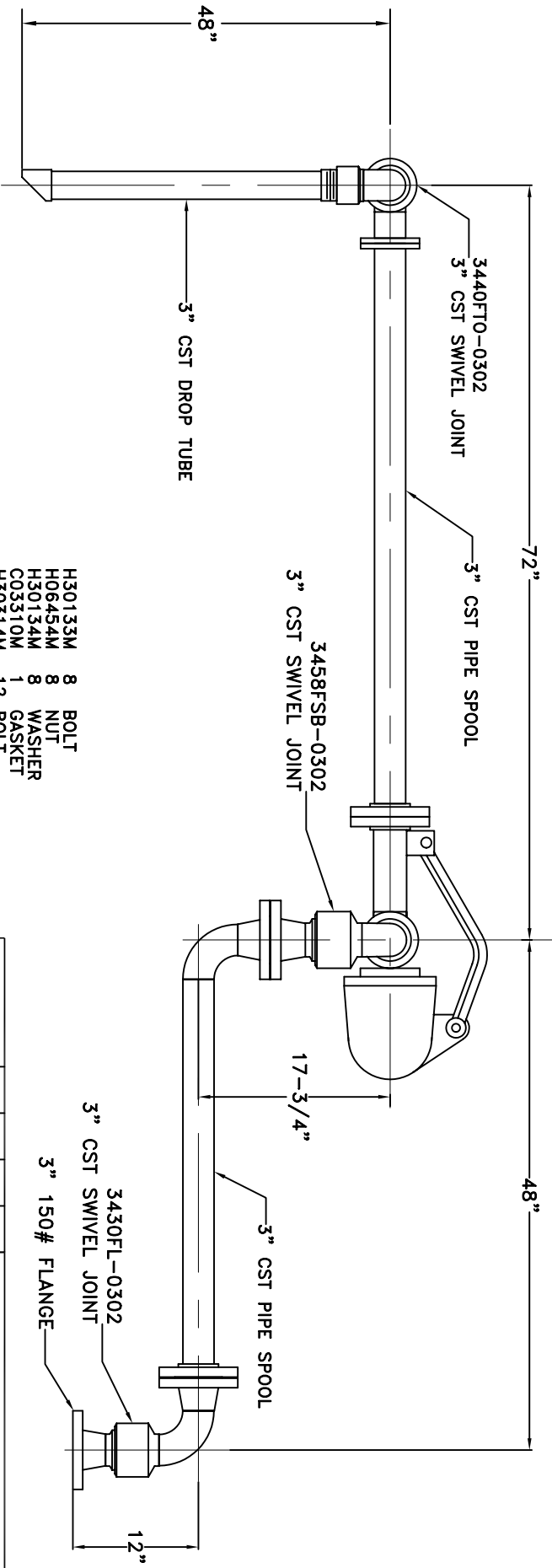


MATERIALS OF CONSTRUCTION: CARBON STEEL
 SWIVEL JOINT SEALS: VITON GFLT

PRODUCT: FATTY ACID/ GLYCERIN/ SOAP

ESTIMATED WEIGHT OF LOADING ARM: 355 LBS
 ESTIMATED MOMENT LOAD AT SPRING: 6,800 IN-LBS
 ESTIMATED MOMENT LOAD AT INLET: 20,000 IN-LBS
 FLANGE GASKETS: KLINGER SIL CS400
 TEST PRESSURE: 90 PSI

LOADING ARM NOT DESIGNED FOR PRODUCT RETENTION
 LOADING ARM NOT DESIGNED FOR WEIGHT BY OTHERS



- H30133M 8 BOLT
- H06454M 8 NUT
- H30134M 8 WASHER
- C03310M 1 GASKET
- H30314M 12 BOLT
- H04740M 12 NUT
- H02507M 12 WASHER
- H04189M 3 GASKET
- H02209PA 1 INSTRUCTION SHEET
- H30446M 1 ALUM NAME PLATE
- H30447M 2 SST TIE BANDS

OPERATION	A	B	C	D
WELD				
MACHINE				
ASSY & TEST				
ASSY ONLY				
TEST ONLY				
PAINT				

1. HIGH LIGHT RECD. OPERATIONS PER ASSY.
 2. RECORD CLOCK NO. WHEN COMPLETE.

3" GT32F-G543

OPW *Engineered Systems*
 www.opw-es.com

DRAWN BY: JLP SCALE: NONE
 CHECKED BY: DATE: 6/26/08
 QUOTE NO. 19043 DRAWING NO. SK19043A