

## M00-20-0343 - C/OPT™ 343 Board Firmware Upload

### Procedure Guide

#### 1 Prerequisites

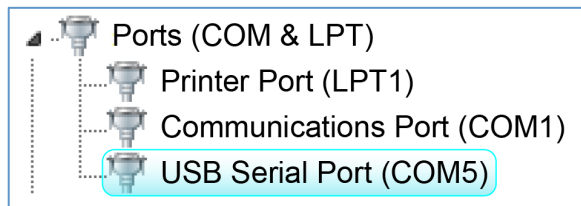
- The PV343 circuit board must be assembly number 5 or higher
- The current S/W version displayed on the C/OPT screen immediately following the power-up INITIALIZING screen must be 4.03A or higher
- The two chips on the PV343 labeled CPLD must have the following versions:
  - CPLD A (May be labeled CPLD A 1) Version 3 or higher
  - CPLD B (May be labeled CPLD A 2) Version 2 or higher
- If any of the above prerequisites is not met, the firmware on the board cannot be upgraded in the field. A remanufactured board must be ordered.

#### 2 PC COMM Port Setup

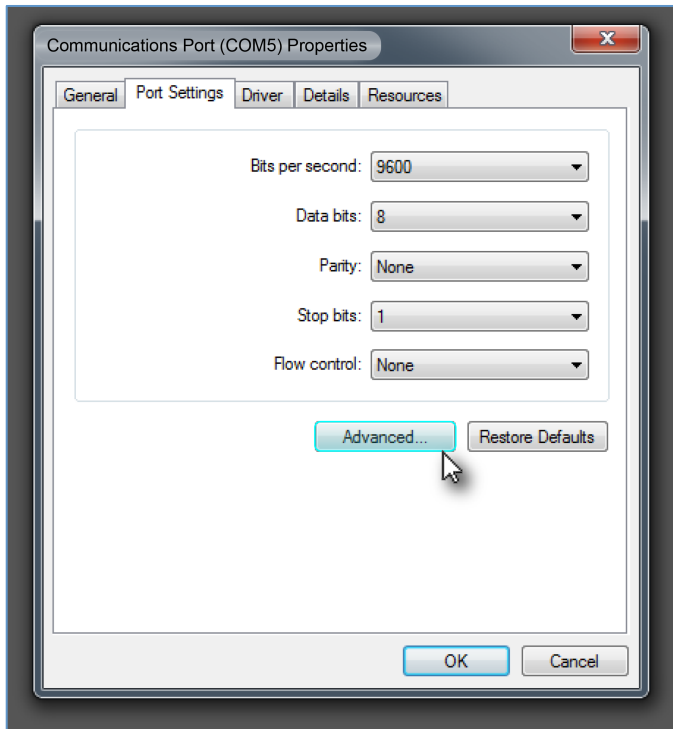
- The PC must have a serial port. A USB to serial adapter may be used. OPW recommends part number 75-2030. If using the adapter, plug it in and the driver will load automatically. Go to the Device Manager to see which comm port the PC has assigned to the adapter.



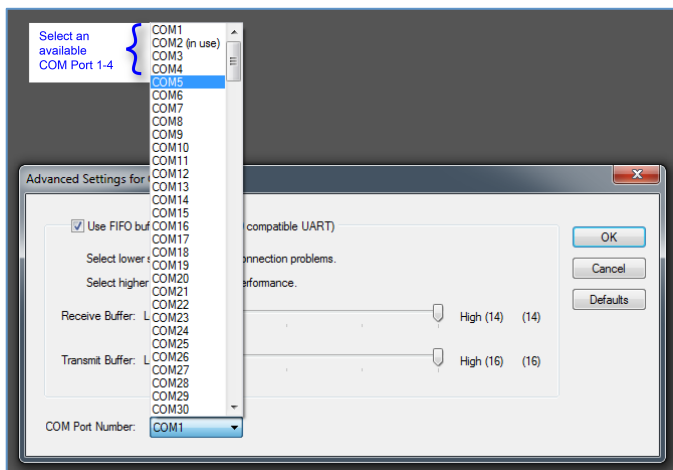
**NOTE:** If using a different USB to serial adapter, the driver menus below will be different.



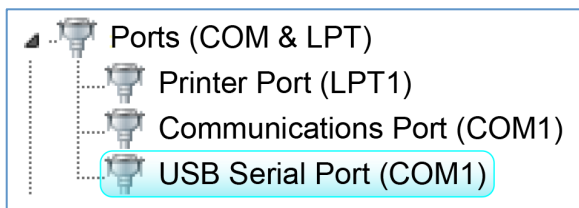
- If the port is not in the range of 1-4, double click on the port device. Select “Port Settings” and then select “Advanced.”



- Set the adapter to an available comm port numbered from 1-4.



- Go back to the Device Manager and verify that the comm port is correct.



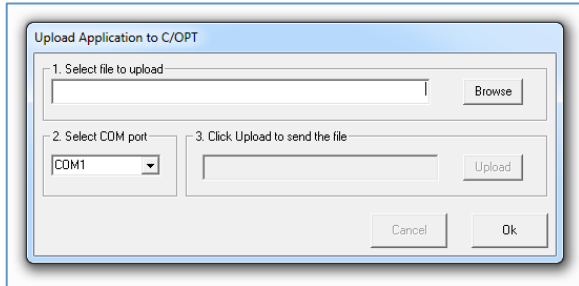
### 3 Installing ARTWare™

If the PC does not already have the ARTWare application loaded, load it now.

ARTWare loads and registers some files needed by the C/OPT Upload Utility. ARTWare is available for download from the OPW website at <http://www.opwglobal.com>.

### 4 Run the C/OPT Upload Application

Run the file UploadCOPT.exe. The following screen should come into view:



### 5 Connect the Serial Cable

If the C/OPT is equipped with a C-56 style receipt printer, unplug its serial connector from connector (J6). Using the FSC3000™ terminal cable (20-1520-01), plug the 9-pin connector into your PC's serial communication port and the RJ45 end into the PV343 board's RS232 connector (J6).

### 6 Firmware Upload Procedure

1. Put the C/OPT into the test mode:
  - a. Press and hold the Graphics Contrast button, then momentarily press the reset button.
  - b. Wait for 2 long beeps then let go of the Graphics Contrast button.
  - c. When the C/OPT display shows "1 – Password", Press YES.
  - d. Enter the password of the C/OPT (default password is "0000").
  - e. In the upper left corner of the display a "P" will appear.
  - f. Press the NEXT button to advance the screen to menu item 17.
  - g. The menu will say "RUN APP" or "RUN/DWL". Leave the C/OPT on this menu.
2. Click "Browse" to navigate to the .DNL file you wish to upload.
3. Select the PC's serial port number from the drop-down box.
4. Click "Upload". If the upload does not begin immediately, press the YES key on the C/OPT. The screen on the C/OPT will show a progress bar for each segment of memory that is loaded. When complete, it will show "APPLICATION LOADED - PASS. Click "OK" to exit.
5. Unplug the RJ45 connector from the PV343 board; then follow the steps to get into the test mode. Using the configuration you printed out re-configure the C/OPT to match the settings on the print out.